

2 BED
APARTMENT

SOHO
YARD

EXAMPLE

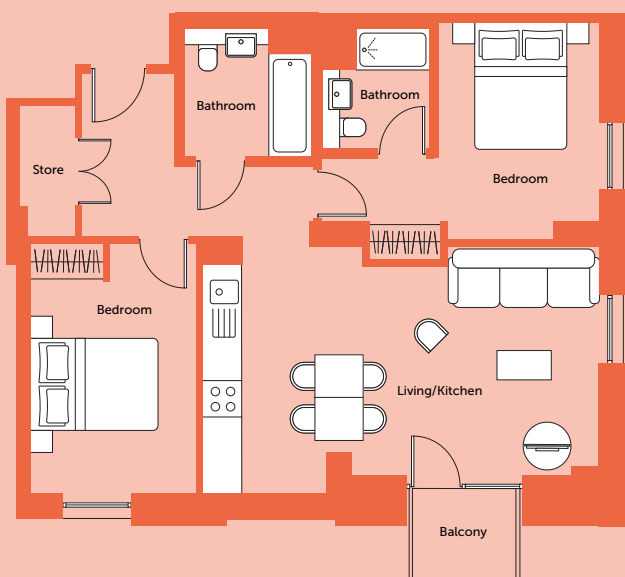
APARTMENT SIZE RANGE
59.96 – 71.10 m² / 645.4 – 765.3 sq ft

DEPOSIT
One month's rent

COUNCIL TAX BAND
Awaiting local authority assessment

EPC RATING
B

TYPE OF TENANCY
Private residential



Apartment layout

- Spacious entrance and ample storage
- Large open plan living and kitchen
- Balcony with great views
- Master bedroom with dressing area, wardrobe and ensuite shower
- Master bathroom with bath tub



Good to know

- Tenants are responsible for the payment of utilities as well as council tax
- Broadband Wi-Fi is included in the rental
- All tenancy applications subject to referencing

Want to book a viewing?

Or need to find out more? Contact our team today on +44 (0)114 321 3886



Life at Soho Yard

We offer apartments in a variety of shapes and sizes, so finding your ideal home should be easy. With options including balconies, city views and open plan living, we have something to suit everyone.

But Soho Yard is more than just a place to live; it's a new community where shared spaces such as lounges, fitness center, and rooftop terraces become gathering spots for neighbours to connect and form friendships.

Revitalised West Bar

With a backdrop of historic architecture, West Bar embodies everything that you love about your favourite city. Kelham Island next door brings the creative buzz, with artisan shops and cool places to meet, eat and drink.

The city centre is on your doorstep with its great mix of shops, restaurants, cultural venues and green spaces, allowing you to enjoy the best of urban living. Excellent transport links make commuting easy, with the M1 close by for fast access to Leeds and beyond.



On-site amenities

- ROOF TERRACE
- HI-TECH GYM
- PRIVATE DINING ROOM
- CO-WORKING
- MEETING ROOM
- CYCLE STORAGE
- GAMES ROOM
- LOUNGE
- PANTRY
- PET WASH FACILITY

Want to book a viewing?

Or need to find out more? Contact our team today on +44 (0)114 321 3886

FURNITURE & UTILITY LIST



Kitchen

- 1x Built-in dishwasher
- 1x Built-in fridge/freezer
- 1x Circle table
- 4x Dining chairs

Living room

- 1x Sofa
- 2x Egg chair
- 1x Coffee table
- 1x TV stand

Utility cupboard

- 1x Washing machine /dryer



Bedroom 1

- 1x King-size Ottoman bed
- 2x Bedside table
- 1x Built-in wardrobe with mirror doors

Bedroom 2

- 1x King-size Ottoman bed
- 2x Bedside table
- 1x Built-in wardrobe with mirror doors



Want to book a viewing?

Or need to find out more? Contact our team today on +44 (0)114 321 3886